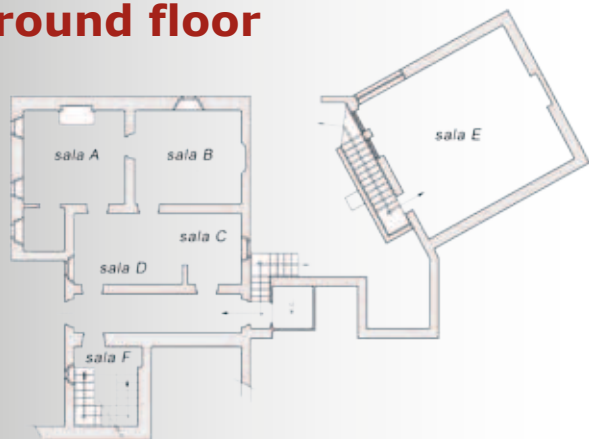


Iola Museum of Montese is situated over an area of 600 square metres, divided into 16 rooms showing about 4000 exhibits.

Ground floor



On the ground floor of the main building there are four rooms relating to rural life, one which houses firearms, edged weapons and pole arms, helmets from the Montecuccoli family branch of Montese can also be seen.

ROOM A

The kitchen with stove and everyday objects was the center of social life of the family.

ROOM B

In this reconstruction of a bedroom objects, photographs, lace and clothing of the period between the mid-1800s and the mid-1900s are exhibited.

ROOM C

This room, dedicated to weaving and spinning, boasts a superb weaving loom of the late 1800's, as well as objects and typical products used in wool spinning.

ROOM D

The work tools used in the trades of the shoemaker and the butcher from the 1800's to after the Second World War can be seen here.

ROOM E

Conference hall and photo exhibition as well as a display of minerals, fossils and archaeological finds, many found in the adjacent areas.

ROOM F

Exhibition of helmets, swords and ancient percussion cap, flint lock and wheel plate weapons dating from between the fourteenth and seventeenth centuries.

On the first floor of the building there are four thematic rooms referring to the period of the Second World War during which, the soldiers of the American 10th Mountain Division and the Força Expedicionária Brasileira (F.E.B.) fought on the ridges of the mountains adjacent to the village, along the Gothic Line:

ROOM O

Dedicated to clothing and equipment of the soldiers of the American 10th Mountain Division, who were all experienced skiers and rock climbers. Their equipment was created specifically for what became the first Alpine Division instituted by the U.S. Army. There is also a showcase dedicated to the Brazilian army.

ROOM P

Objects soldiers used daily on the front lines. Some of these objects were found in the foxholes where the soldiers were stationed and fought. Weapons, military decorations and personal correspondence were donated by veterans to complete the exhibition. To note the radio equipments used by the Signal Corp and a diorama that reconstructs a first aid station.

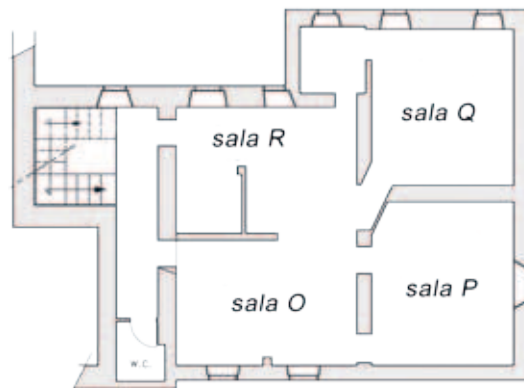
ROOM Q

Exhibits equipment, military decorations and weapons supplied to the German soldiers of the 232th Infantry Division of the Wehrmacht.

ROOM R

This room, dedicated to the "Italian Memories", shows notebooks, school report cards and other school items in the original packaging of the time as well as uniforms, helmets, military decorations, equipment, pins, medals, coins and objects dating from twenty years before the end of the war, in 1945. In one showcase are on display some military objects adapted to civilian use, made by the people to be of assistance in the activities of everyday life.

First floor



Basement



In the basement, amidst the original settings of stone walls, are six rooms related to the activities and professions of the agricultural civilization:

ROOM G

Agricultural tools for working the fields and animal traps.

ROOM H

The reconstruction of a cowshed showing cows and typical accessories. The upper floor, which currently houses the conference room and photo exhibition, used to be the hay loft.

ROOM I

Display of carpentry and knife sharpening tools.

ROOM L

The hall of the cellar and winery hosts all the tools necessary for processing grapes. In keeping with the setting, wine tasting of fine wines is a recurring event.

ROOM M

The chestnut and all the products resulting from its processing, has sustained the population of the mountain for decades. The room houses the wooden shovel of an ancient water mill, tools for processing the chestnuts and a reconstructed drying kiln for chestnuts which were then peeled and milled to obtain flour.

ROOM N

The room, dedicated to the processing of wheat and potato, is concentrated on plows from the middle of 1800's and the first machines used to work wheat.

The back of the building (once a manure deposit) hosts tractors and a threshing machine used from the early 30's until the 70's, to threshed the grain previously massed in large sheaves in the spacious courtyards.

Short history of the museum

The Museal System of Iola was founded in 2011 and consists of a series of collections, of approximately 4000 objects, which are exhibited over 16 rooms with a total area of about 600m². Additionally, there are itineraries through the battlefields where Allied and German soldiers fought during the months between late 1944 and early 1945 on the last line of defense of the Green Line better known as the Gothic Line.

MEMORIE D'ITALIA

The section MEMOIRS OF

SISTEMA MUSEALE IOLA DI MONTESE ITALY featured, since its establishment in 2003, a series of collections specifically concerning the period of World War II and it is divided into rooms devoted to the various armies that fought in the area between late 1944 until the end of the war in Italy.

SENTIERI DELLA LINEA GOTICA

The museum is surrounded by the bloody battlefields on

SISTEMA MUSEALE IOLA DI MONTESE which the fighting, between 1944 and 1945, involving both soldiers and the civilian population, in a winter, among the coldest in living memory. Today, crossing these battlefields we can find the PATHS OF THE GOTHIC LINE which follow the ridges and woods where the trenches of the opposing armies are still visible and where war relics can still be found. A moment of reflection among secular chestnut trees and memories that are fading with the passing of time.

CIVILTA' CONTADINA

The section COLLECTION OF MONTESINE THINGS is

SISTEMA MUSEALE IOLA DI MONTESE dedicated to the rural civilization and since the foundation of the museum in 1992, is characterized by a series of collections that narrate the lives of our fathers in the second half of 1800's and the first half of 1900's. The rooms accompany the visitor through typical rural dwellings, the processing and produce of agricultural products and crafts that have been forgotten in time.

Entrance: FREE OFFER

Services to the public: guided tours for groups and school classes. Lesson for school.

Opening:

April May June September October:

Sunday and holidays 3:30-6:30 pm

July - August: every days from 3:30 alle 6:30

Every day by appointment by calling +39 320 4397331

FOR INFORMATION AND BOOKING:

www.sulleormedeinostripadri.it

info@sulleormedeinostripadri.it



How to reach Iola di Montese

The museum is located in the former rectory of the old church in Iola di Montese, Trebbo 1 street, province of Modena.

From Modena

Exit the A1 highway at Modena South, continue for the provincial road along the Panaro valley direction Vignola-Fanano-Sestola; after about 50 km follow the road signs on the left for Montese, at Docciola Bridge (Ponte Docciola). Once in Montese continue towards Maserno; from the center of the village follow road signs, on the left, to Iola.

From Bologna

Exit the A1 highway at Sasso Marconi, take the Porrettana highway towards Porretta Terme. Arriving at Vergato, on the right, follow the road signs for Castel d'Aiano. After the town of Castel d'Aiano take the direction Gaggio Montano, after about 6 km on the right, follow the road signs to Iola.

From Pistoia

Take the Porrettana SS64 towards Porretta Terme then to Silla, from here follow the road signs on the left for Gaggio Montano, arriving at Gaggio Montano follow the road signs to Castel d'Aiano, after about 5 km, on the left, follow road signs to Iola.

Da Tammy

Bar and food

Iola di Montese (Mo)

Tel. 059 980067

Farmacia San Lorenzo

Phytotherapy and homeopathy

Montese (Mo)

Tel. 059 982433

www.farmabuy.it

IOLA Costruzioni Srl

Iola di Montese (Mo)

Tel. 059 980238

www.iolacostruzioni.it

La Padulla

Farm Holidays

Iola di Montese (Mo)

Tel. 059 980333

Ristorante Clara

Locanda del Sole
Traditional local cuisine

Montese (Mo)

Tel. 059 980066

Snoopy

Artisan production of ice cream

Montese (Mo)

Tel. 059 982460



SISTEMA MUSEALE
IOLA DI MONTESE

